

Shore Park

Park Models

Built in McMinnville, OR

www.factorydirecthomes.net



Vacation Homes: 12/14 Series Floor Plans

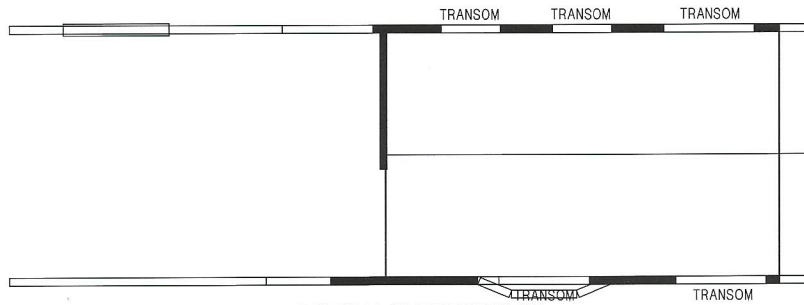
Factory Direct Homes

www.SkylineFactoryDirectHomes.com

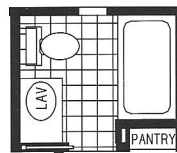
(888) 973-2286



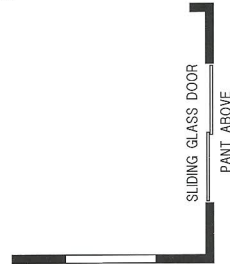
Factory Direct Homes is a licensed DBA of NW HomeBuyers.net LLC



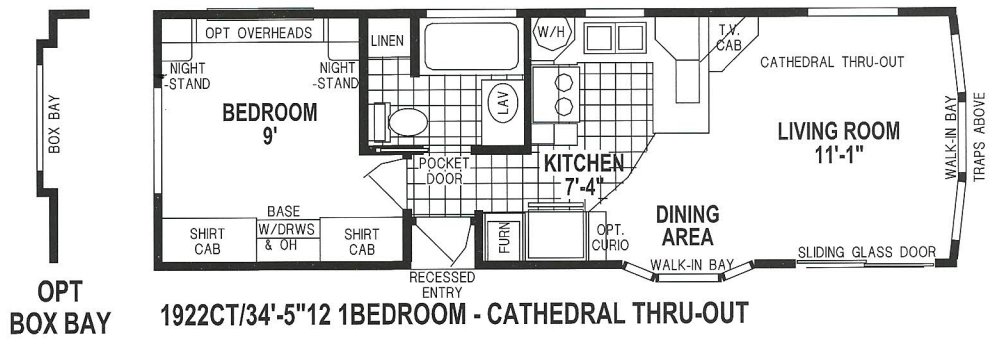
OPTION CLERESTORY
N/A WITH OPTION SUPER BAY



ALT BATH

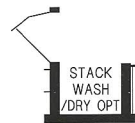


ALTERNATE FRONT ENTRY

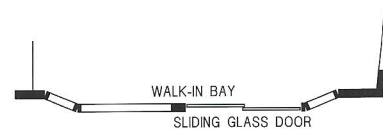


OPT BOX BAY

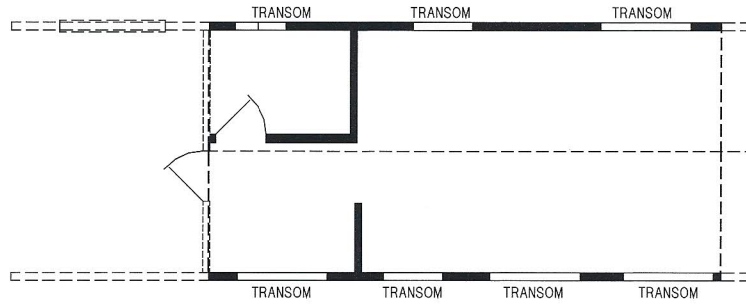
1922CT/34'-5"12 1BEDROOM - CATHEDRAL THRU-OUT



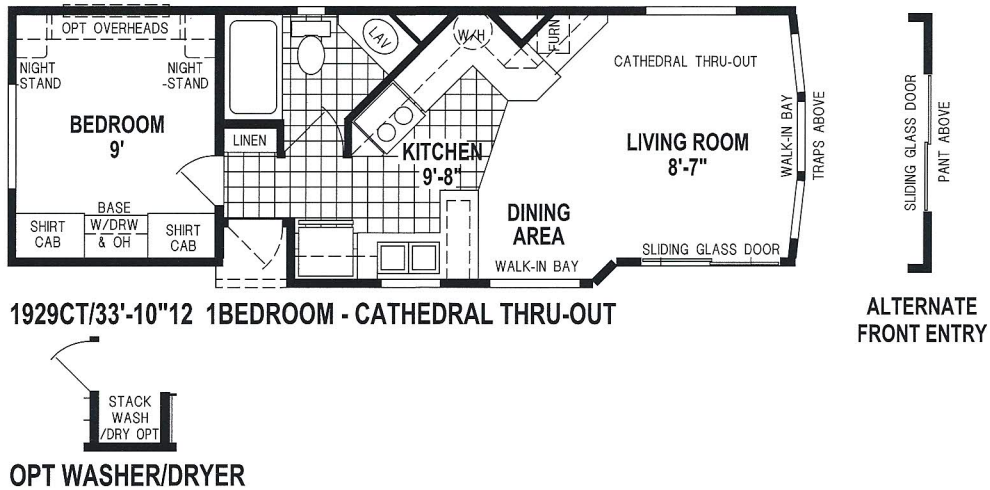
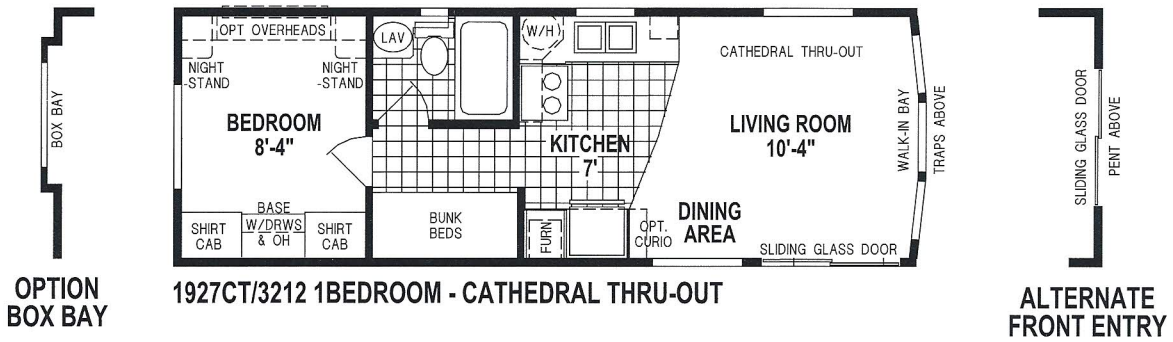
OPT WASHER/DRYER

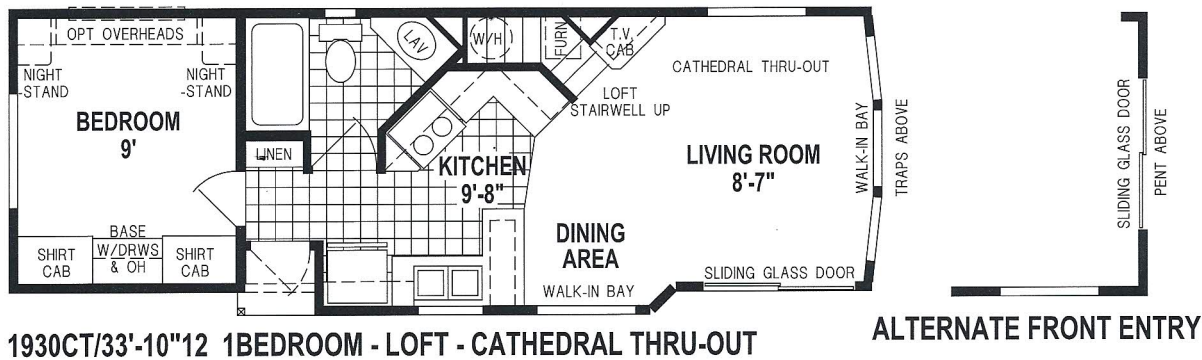
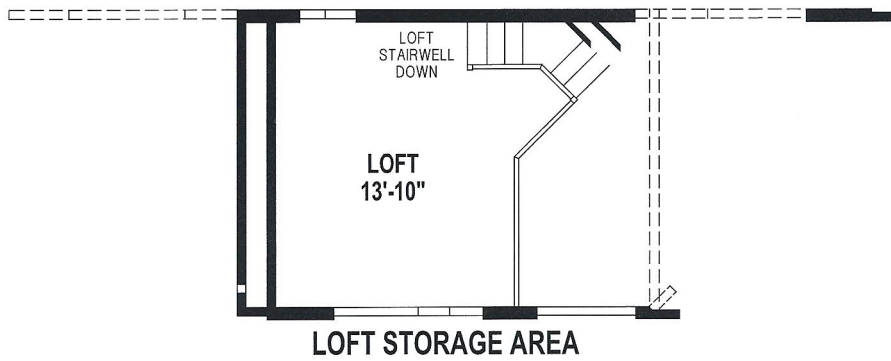
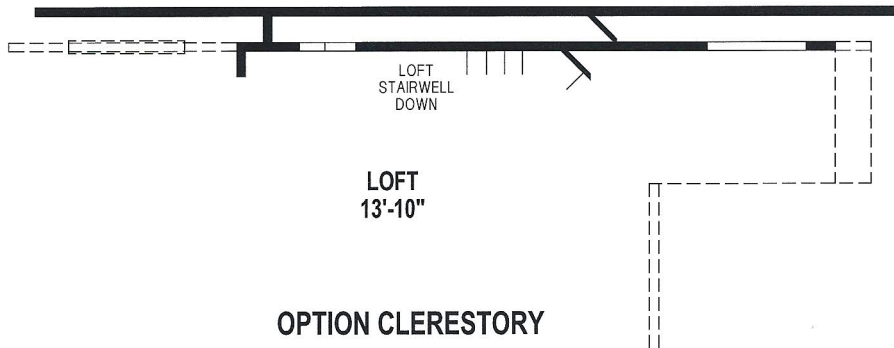


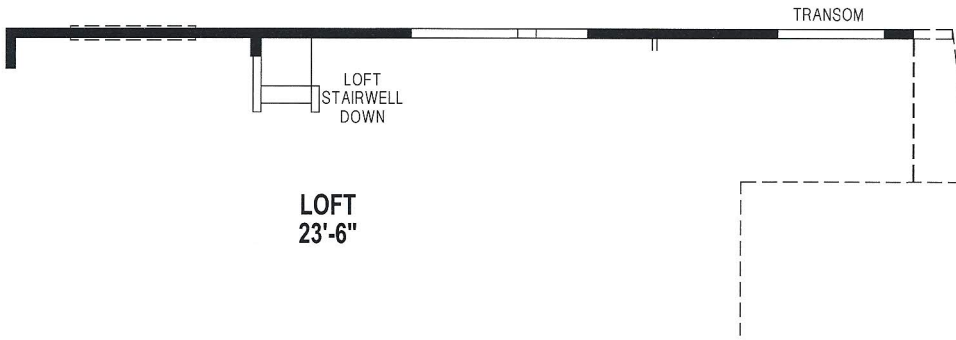
OPTION SUPER BAY



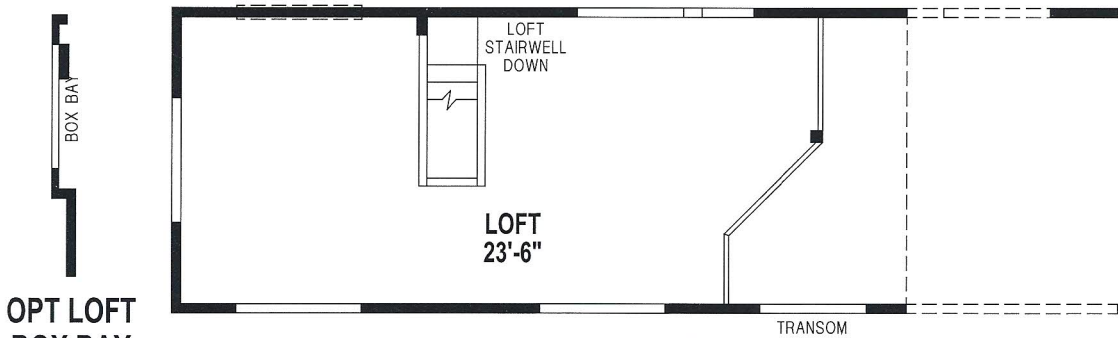
OPTION CLERESTORY





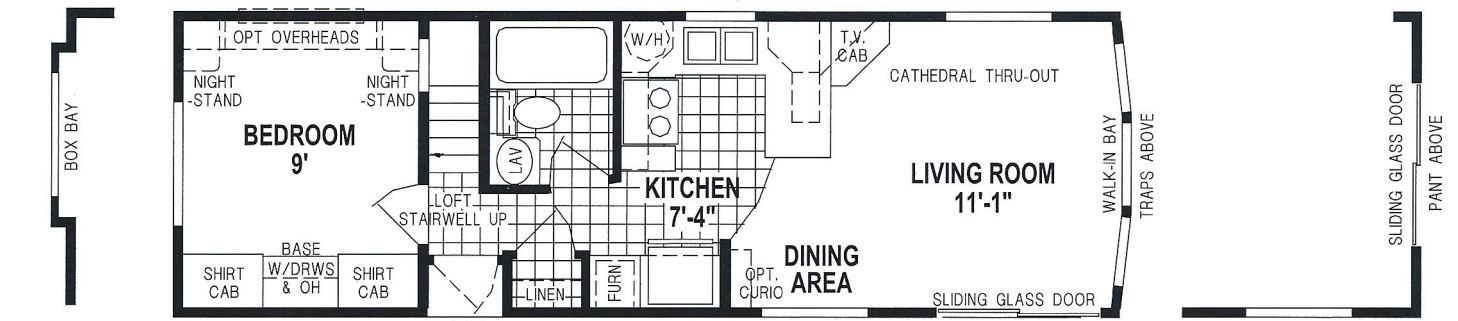


OPTION CLERESTORY



OPT LOFT BOX BAY

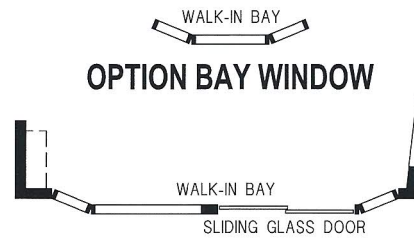
LOFT STORAGE AREA

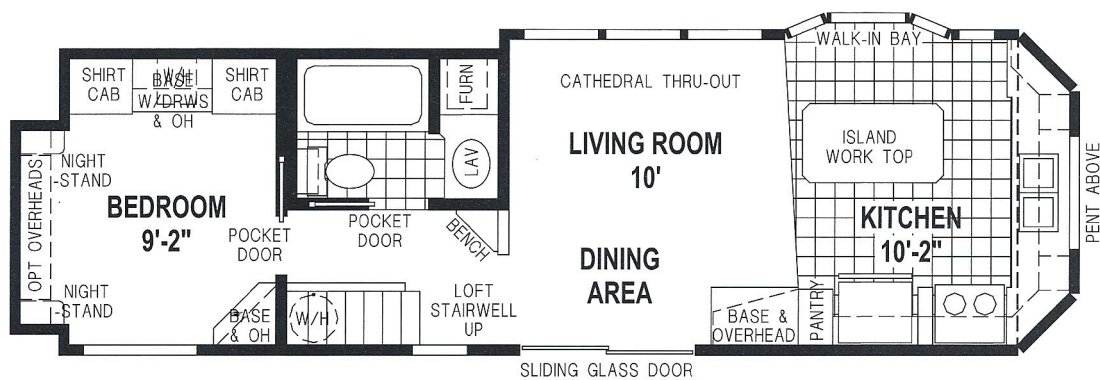
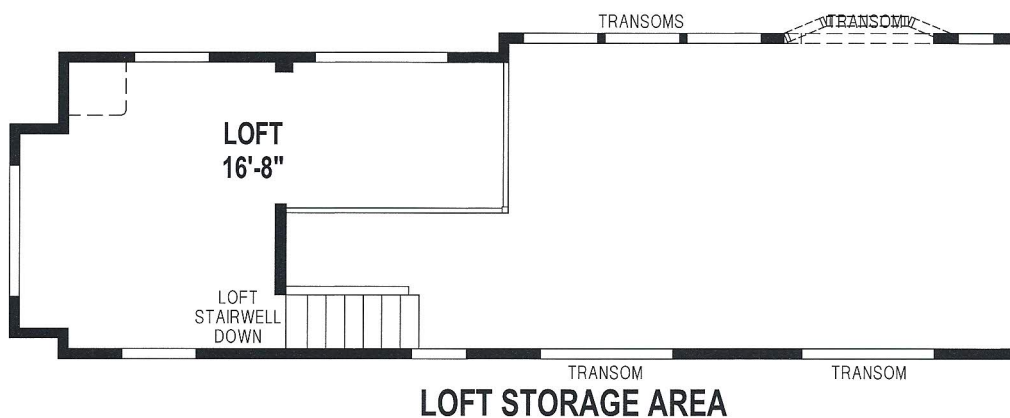


OPT BOX BAY

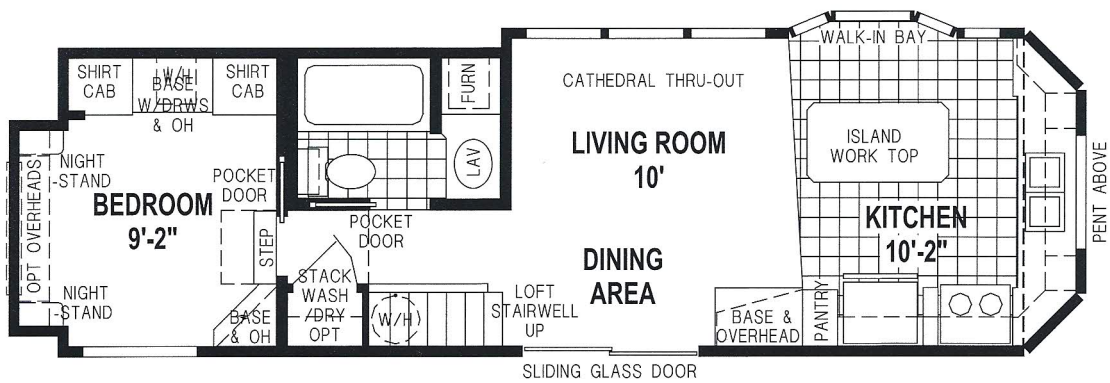
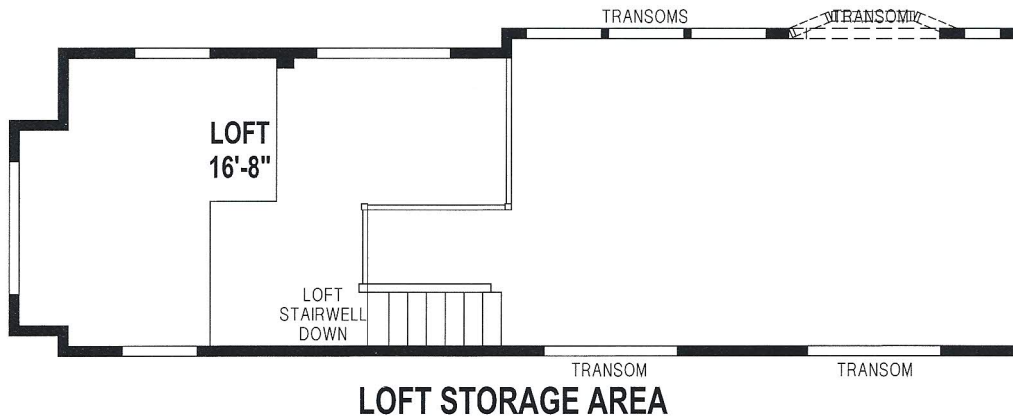
1931CTL/34'-5"12 1BEDROOM - LOFT - CATHEDRAL THRU-OUT

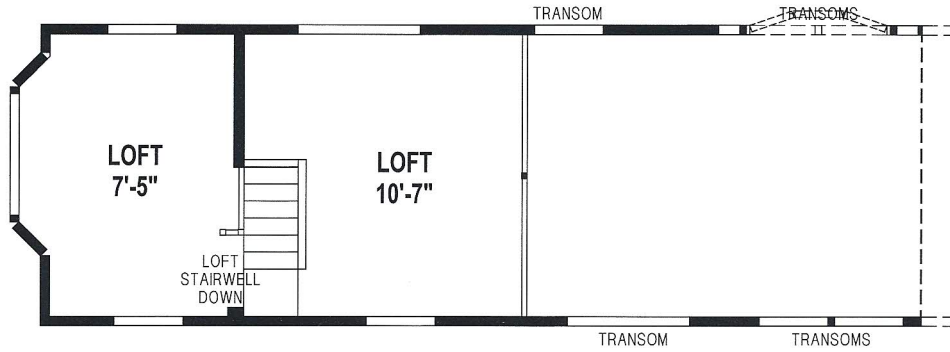
ALTERNATE FRONT ENTRY



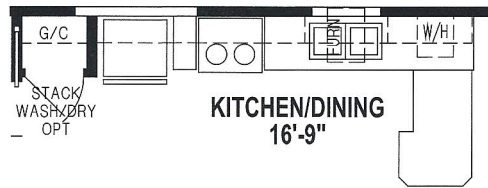


1941CT/34'-10"12 1BEDROOM - LOFT - CATHEDRAL THRU-OUT

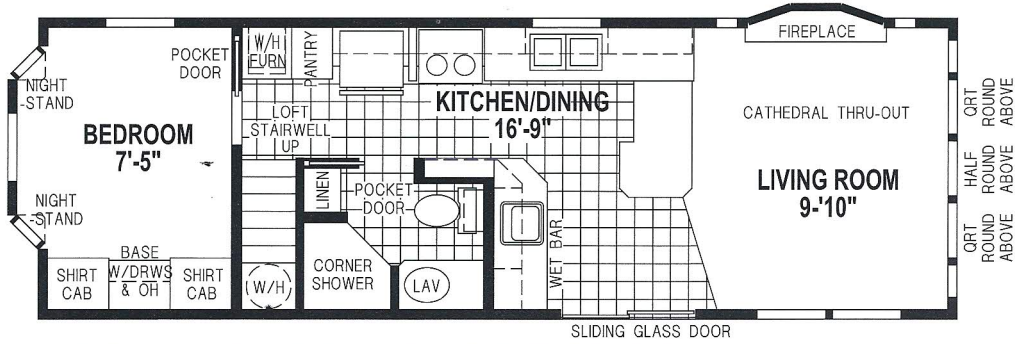




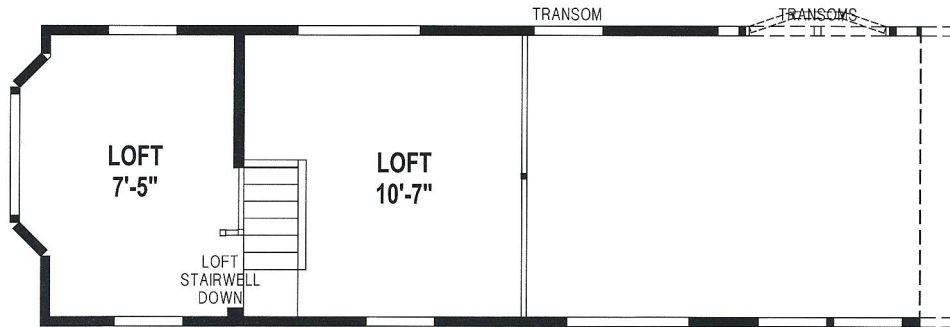
LOFT STORAGE AREA



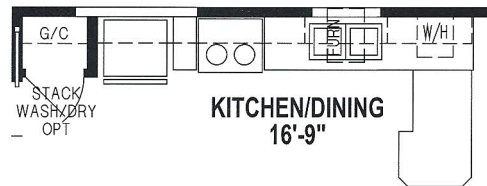
OPTION GUEST CLOSET



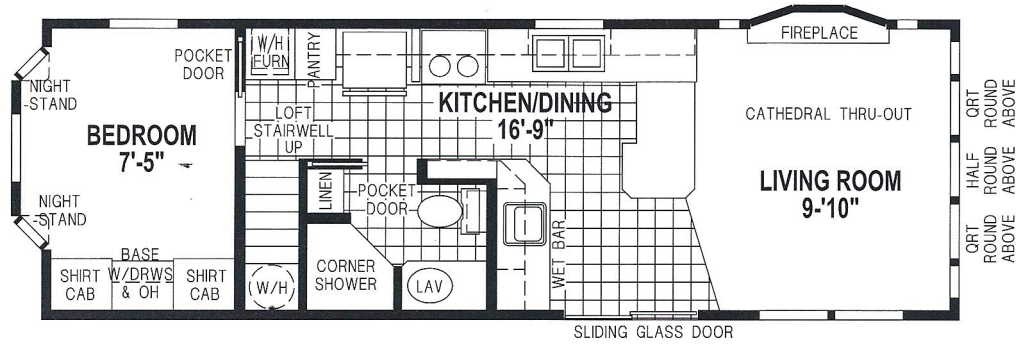
1955CT/3412 1BEDROOM - LOFT - CATHEDRAL THRU-OUT



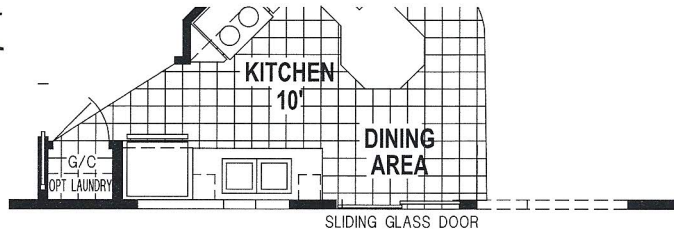
LOFT STORAGE AREA



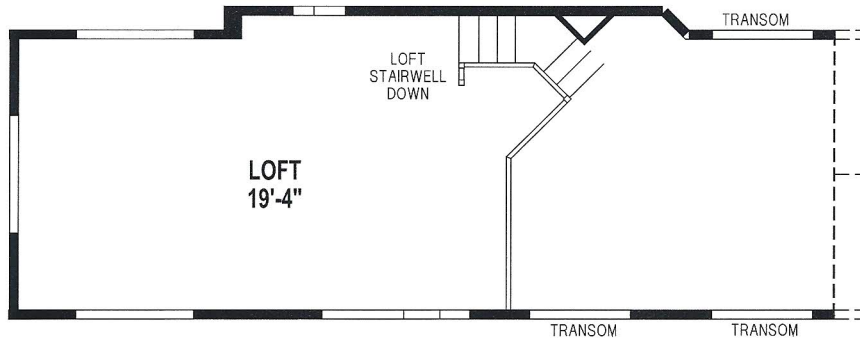
OPTION GUEST CLOSET



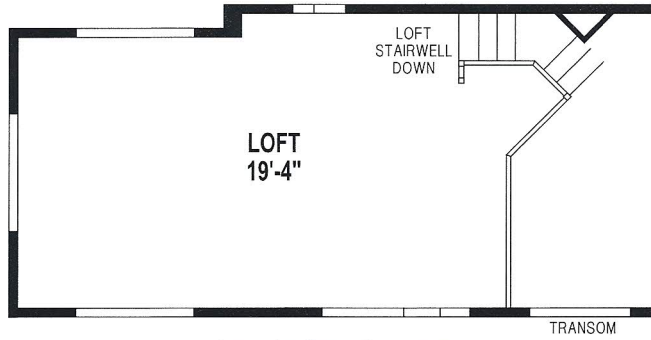
1955CTJ/3412 1BEDROOM - LOFT - CATHEDRAL THRU-OUT



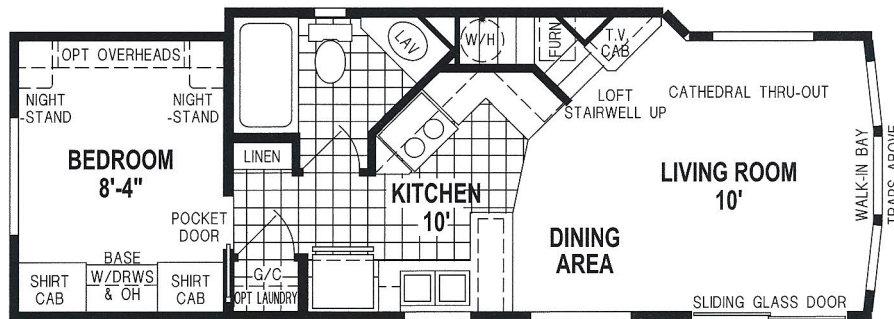
OPTION KITCHEN



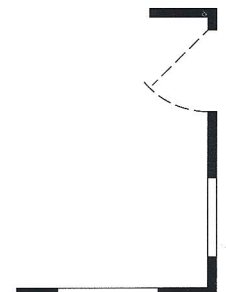
LOFT STORAGE AREA/OPTION CLERESTORY



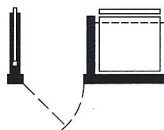
LOFT STORAGE AREA



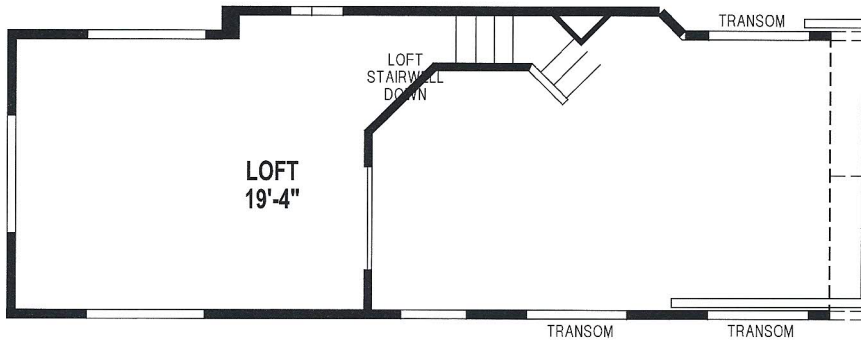
1957CT/33'-2"12 1BEDROOM - LOFT - CATHEDRAL THRU-OUT
(NOT AVAILABLE WITH HOLDING TANKS)



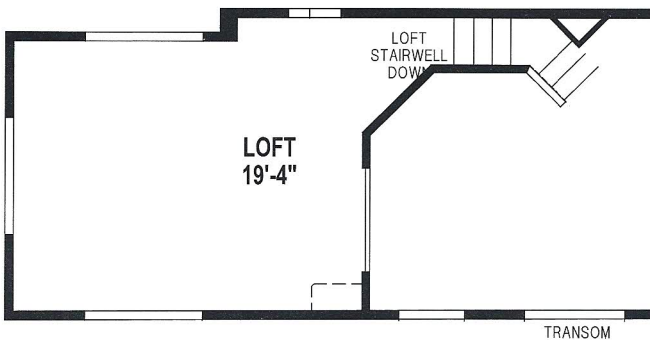
OPTION ENTRY



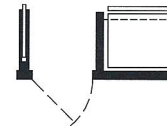
OPTION EXTERIOR DOOR



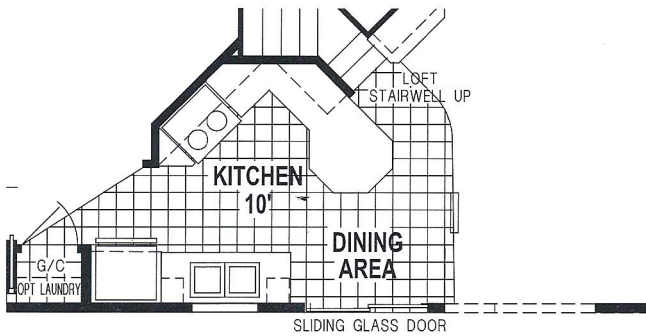
LOFT STORAGE AREA/OPTION CLERESTORY



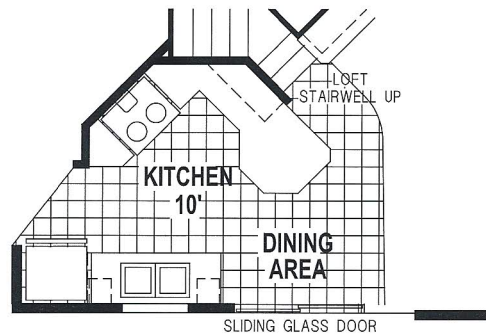
LOFT STORAGE AREA



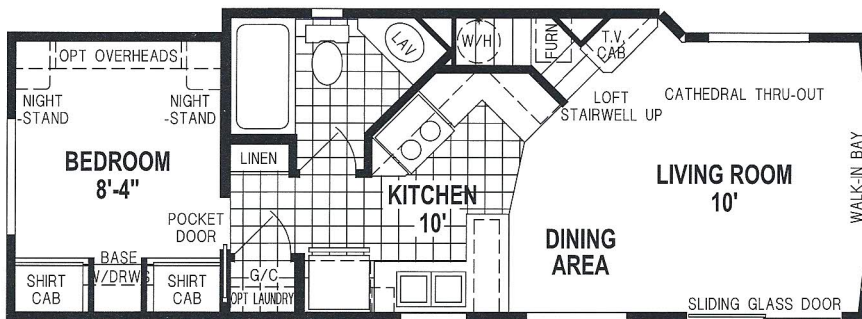
OPTION EXTERIOR DOOR



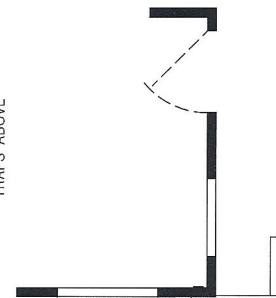
OPTION KITCHEN



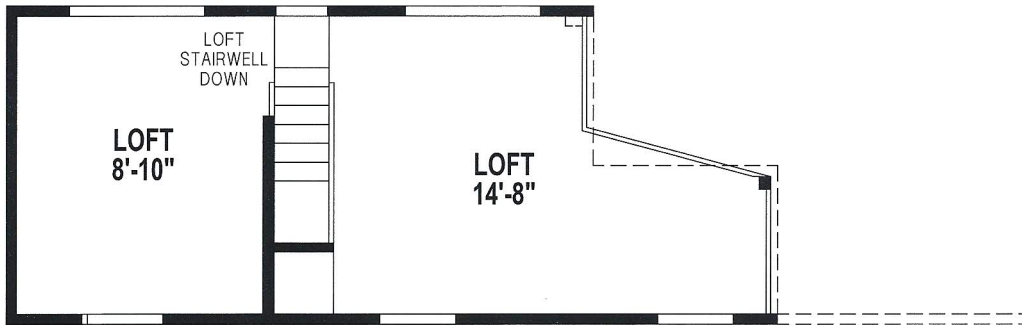
OPTION KITCHEN/COOKING CENTER



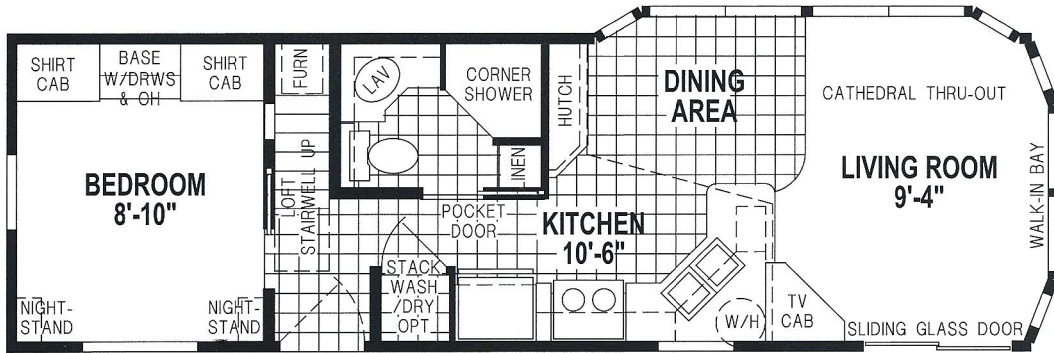
**1957CTL/33'-2"12 1BEDROOM - LOFT - CATHEDRAL THRU-OUT
(NOT AVAILABLE WITH HOLDING TANKS)**



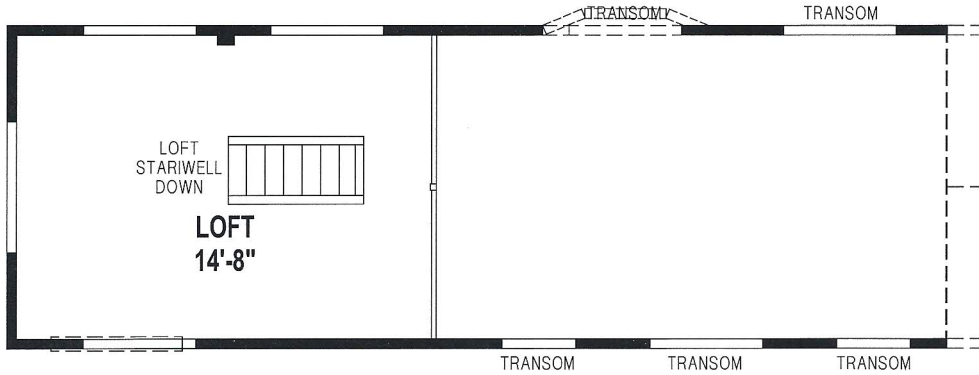
OPTION ENTRY



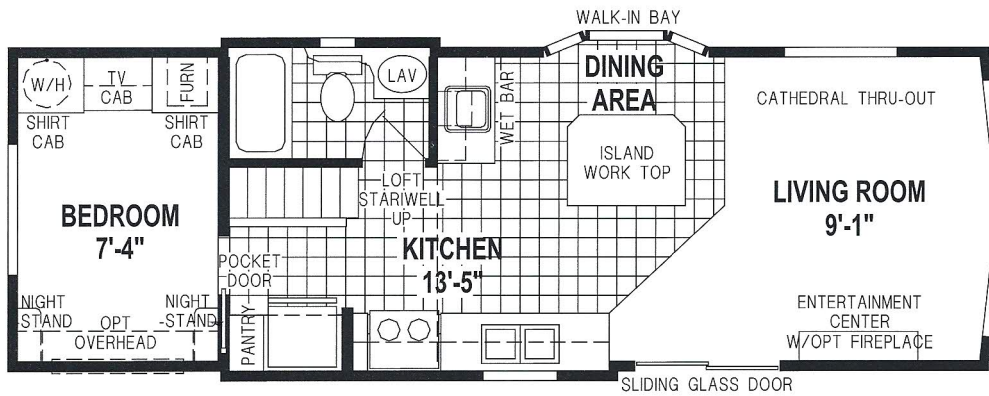
LOFT STORAGE AREA



1960CT/34'-5"12 1BEDROOM - LOFT - CATHEDRAL THRU-OUT



LOFT STORAGE AREA



1963CT/33'-9"12 1BEDROOM - CATHEDRAL THRU-OUT

Miscellaneous Options (per floor plan)



**OPTION
BENCH BAY**



**OPTION
CURIO BAY**



OPTION LAUNDRY



**OPTION
30 gal. W/H**



ALTERNATE S.G.D. & T.V. CAB

Shore Park

12/14 Series Park Models Standard Features

LIVING AREAS

- Upgrade Carpet & Pad
- Window Valances
- Wood Mini Blinds
- 72" Sliding Glass Door w/Drape per Floor Plan
- Chandelier Dining Light w/Dimmer Switch
- TV Jack
- Large Cove at Ceiling
- 52" Paddle Fan w/Lights
- Walk-In Bay (Per Floor Plan)
- Framed Mirror in Dining Room (Model Specific)

KITCHEN

- Drawer Over Door Cabinet Construction
- Oak or Mahogany Hardwood Cabinets w/Residential Hidden Hinges
- Lined Overhead Cabinets
- Adjustable Shelves in Overhead
- 6" Laminate Backsplash w/Crescent Edge
- Stainless Steel Sink w/Single Lever Faucet & Sprayer
- 18 cu. ft. Double Door Frost Free Refrigerator
- 30" Deluxe Gas Range w/Spacesaver Microwave Hood
- Valance w/Wood Mini-Blinds
- Vinyl Floor Covering

BATHROOM

- Decorative Mirror w/Strip Light (Loft Models)
- Towel Bar & Paper Holder
- 54" Fiberglass Tub/Shower Combo, Grab Bar & Overdrape per Floor Plan
- Oak or Mahogany Hardwood-Cabinets w/Residential Hidden Hinges
- China Lav Bowl w/Popup Drain
- 6" Laminate Backsplash w/Crescent Edge
- Elongated Toilet Bowl
- Vinyl Floor Covering

BEDROOM

- Upgrade Carpet & Pad
- Window Valance
- Wood Mini Blinds
- Ceiling Light
- Wardrobe w/Drawers Below
- Ventilated Wire Shelving in Wardrobes
- TV Jack
- Night Stands w/Swivel Lights per Floor Plan
- Framed Mirrored Headboard

ADDITIONAL FEATURES

- RPTIA Approved
- Cathedral Ceiling Throughout
- 12" Front & Rear Eaves / Fascia & Eaves Hardie Cempanel
- 8" Eaves Both Sides
- Detachable Hitch
- 25 Year Owens Corning Shingle Roof
- Vinyl Lap Siding or Hardie Cempanel Vertical Siding
- Tape & Textured Ceiling
- Pre-Finished Door Jambs
- Lever Latch Door Handles
- 6-Panel Interior Passage Doors
- 1/2" Rebond Carpet Pad w/Tack Strip
- 20 Gal. Electric Water Heater w/Exterior Access
- PEX Water Lines
- Gas Furnace
- Water Shut-Off Valves Throughout
- Low "E" Vinyl Dual Glazed Windows
- 7'-6" Sidewall Height
- 2 x 4 Sidewalls, 16" O.C.
- 16" O.C. Stud Spacing at Interior Walls
- 2 x 6 Floor Joists, 16" O.C.
- Copper Wiring
- Smoke Detector w/Battery Backup & False Alarm Control
- Fire Extinguisher
- Exterior Receptacle w/GFI Breaker
- Exterior Recept for Heat Tape at Water Inlet
- 50 amp Electric Panel
- Power Cord in Storage Box
- Exterior Lights At All Exterior Doors
- Iron Gas Piping w/Shut-Off Valves
- Recessed Rear Entry Door w/Deadbolt per Floor Plan
- Silent Rocker Switches Throughout
- Fiberglass Heat Ducts
- Toe Kick Registers in Kitchen & Bath
- R-22 / R-11 / R-14 Insulation



For your comfort and safety, Skyline park model designs are approved and inspected for conformance to RPTIA standards.

Overall length does not include approximately four foot hitch. Room sizes are measured from floor ends and wall centers.

Because of progressive product improvement, all prices & specifications are subject to change without prior notice or obligation to Skyline Corporation.

Your Retailer, an independent contractor, who is not an agent of Skyline Corporation, is the party responsible for your purchase contract and any additions, deletions, alterations, or attachments made to or in your park model.